

**DOCUMENT 00 90 00
ADDENDUM**

ADDENDUM NO. [3] Date: January 20, 2020

**RE: WITC – NEW RICHMOND CAMPUS
 VETERINARY TECHNICIAN ADDITION REBID 2020
 1019 SOUTH KNOWLES AVE
 NEW RICHMOND, WI 54017
 HSR PROJECT NO. 18043-6**

**FROM: HSR Associates, Inc
 100 Milwaukee Street
 La Crosse, WI 54603
 (608) 784-1830**

To: Prospective Bidders

This addendum forms a part of the Contract Documents and modifies the original Bidding Documents dated December 2019. Acknowledge receipt of this Addendum in the space provided on the bid form. Failure to do so may subject the Bidder to disqualification.

This Addendum consists of (1) page, and (2) 30 x 42 drawings.

CHANGES TO PRIOR ADDENDA:

1. Addendum 2: Item 10, delete reference to GLT-14. This glass type is no longer required.

CHANGES TO DRAWINGS

2. Sheet A200R Roof Plan / Exterior Elevations / Sections 30 x 42 attached hereto
 - a. Revisions clouded on Drawing.
 - b. Note the window revisions at elevations 4 and 6A200R.
3. Sheet A600R1 Wall Types / Door Schedule 30 x 42 attached hereto
 - a. Revisions clouded on Drawing.
 - b. Note the revisions to the FRAME ELEVATIONS

END OF DOCUMENT 00 90 00

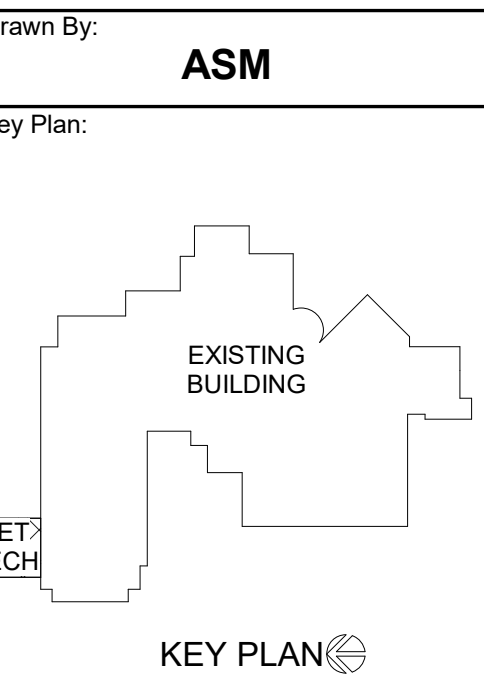


Consultant:

Project Title: **WITC - NEW RICHMOND CAMPUS VETERINARY TECHNICIAN ADDITION - REBID**
Project Location: 1019 SOUTH KNOWLES AVENUE NEW RICHMOND, WI 54017
Sheet Title: **ROOF PLAN / EXTERIOR ELEVATIONS/ SECTIONS**

Project Number: **18043-6**
Project Date: **DECEMBER, 2019**
Drawn By: **ASM**

Key Plan:



Revisions:

No.	Description	Date
A03	ADDENDUM 3	1-20-2020

Graphic Scale: **VARIES**
Last Update: **1/20/2020 10:33:40 AM**

A200R

GENERAL ROOF NOTES:

A SEE ROOF SYSTEM NOTES FOR MINIMUM INSULATION VALUES.

B ROOFING CONTRACTOR TO VERIFY ALL TAPERED INSULATION DRAWING PLAN DRAIN LOCATIONS WITH PHYSICAL LOCATION OF ROOF DRAIN AS INSTALLED BY PLUMBING TRADE PRIOR TO APPROVAL OF TAPERED INSULATION SUBMITTAL DRAWING.

C VERIFY ROOF EQUIPMENT AND PENETRATIONS WITH ALL TRADES.

D ALL METAL ITEMS AT ROOF TOPS, UNLESS REQUIRED OTHERWISE BY EQUIPMENT MANUFACTURER, SHALL BE PAINTED TO MATCH OTHER TRIM BY THE G.C. - PREPARE PRIME AND PAINT AS REQUIRED. PROVIDE FACTORY PRIMED PRODUCTS WHERE POSSIBLE.

E ROOF PENETRATIONS FOR DRAINS, VENTS, ETC. SHALL BE COMPLETED AS PER CURRENT SMACNA REQUIREMENTS AND THE ROOF MANUFACTURERS APPROVED DETAILS FOR WARRANTY SATISFACTION. COORDINATE QUANTITY AND LOCATIONS WITH MEP CONTRACTOR.

F WHERE MEMBRANE IS SHOWN OVER TOP OF WALL EXTEND DOWN OPPOSITE SIDE AND SECURE TO BLOCKING.

G TOP OF WALL BLOCKING SHOWN IS GRAPHIC. PROVIDE BLOCKING THAT SHALL BE ANCHORED TO WALL BELOW AS RECOMMENDED BY ROOFING SYSTEM MANUFACTURER TO WITHSTAND WIND UPLIFT AS STATED IN CODE. TOP OF WALLS SHALL SLOPE TOWARDS ROOF.

H INSTALL BOND BREAK BETWEEN ALL WOOD BLOCKING AND CMU OR CONCRETE.

I THE GENERAL CONTRACTOR, ROOFING CONTRACTOR AND PLUMBING CONTRACTORS SHALL MEET TO PLAN AND DISCUSS FINAL ROOF DRAIN LOCATIONS. TAPERED INSULATION DRAWING SHALL BE RE-SUBMITTED TO THE A/E AFTER DRAIN LOCATIONS ARE APPROVED BY ALL IN WRITING. TAPERED INSULATION INSTALLED CONTRARY TO THE LOW POINT OF THE DRAIN, OVER FLOW OR SCUPPER LOCATIONS SHALL BE CAUSE FOR REJECTION OF WORK.

ROOF SYSTEM DESCRIPTIONS:

A ADHERED, SINGLE MEMBRANE ROOFING SYSTEM ON 1/4" PER FOOT POLYISOCYANURATE BASE INSULATION SYSTEM CONSISTING OF TAPERED INSULATION OVER MINIMUM R10 BASE LAYER, MECHANICALLY FASTEN BASE LAYER INSULATION OVER VAPOR BARRIER OVER WOOD DECK. VAPOR RETARDER SHALL BE TAPED AND SEALED AT FULL PERIMETER AND PENETRATIONS INCLUDE OVERLAPPED SEAMS.

ROOF EQUIPMENT LEGEND:

RD = ROOF DRAIN WITH 4" SQUARE SLUMP. INSTALL TO MEET ROOF WARRANTY REQUIREMENT - SEE PLUMBING

KEY NOTES ROOF

1 SCUPPER - CENTER IN WALL - SHALL BE CONSTRUCTED PER SMACNA GUIDELINES

GENERAL NOTES:

A SEE SPECIFICATION FOR MATERIAL TYPE.

LEGEND:

KEYNOTE TAG

WINDOW TAG, SEE SHEET A205 FOR EXTERIOR ALUMINUM FRAME ELEVATIONS

BRICK VENER CONTROL JOINT

METAL PANEL 1

METAL PANEL 2

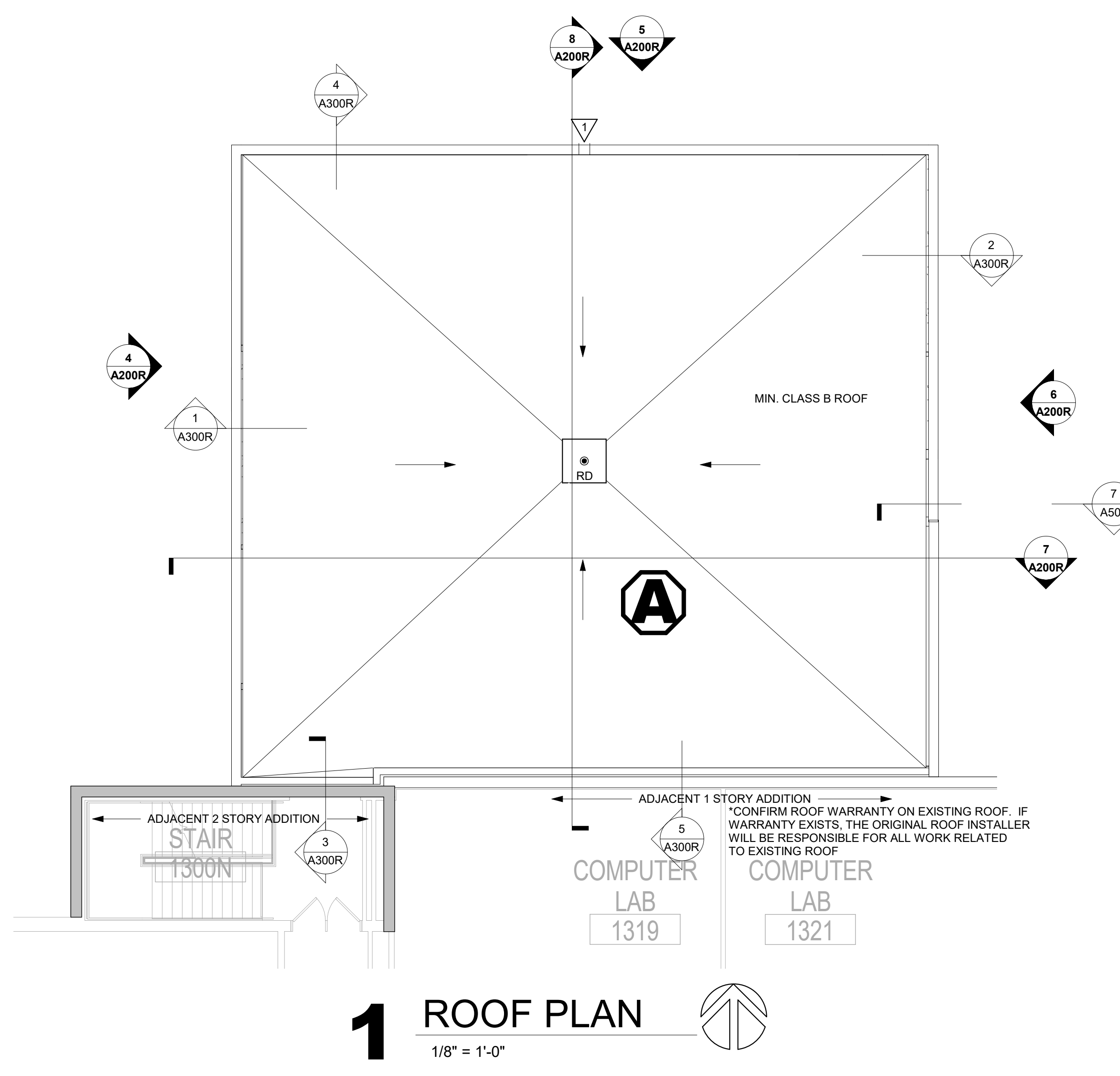
SEE FRAME ELEVATIONS

KEY NOTES ELEVATION

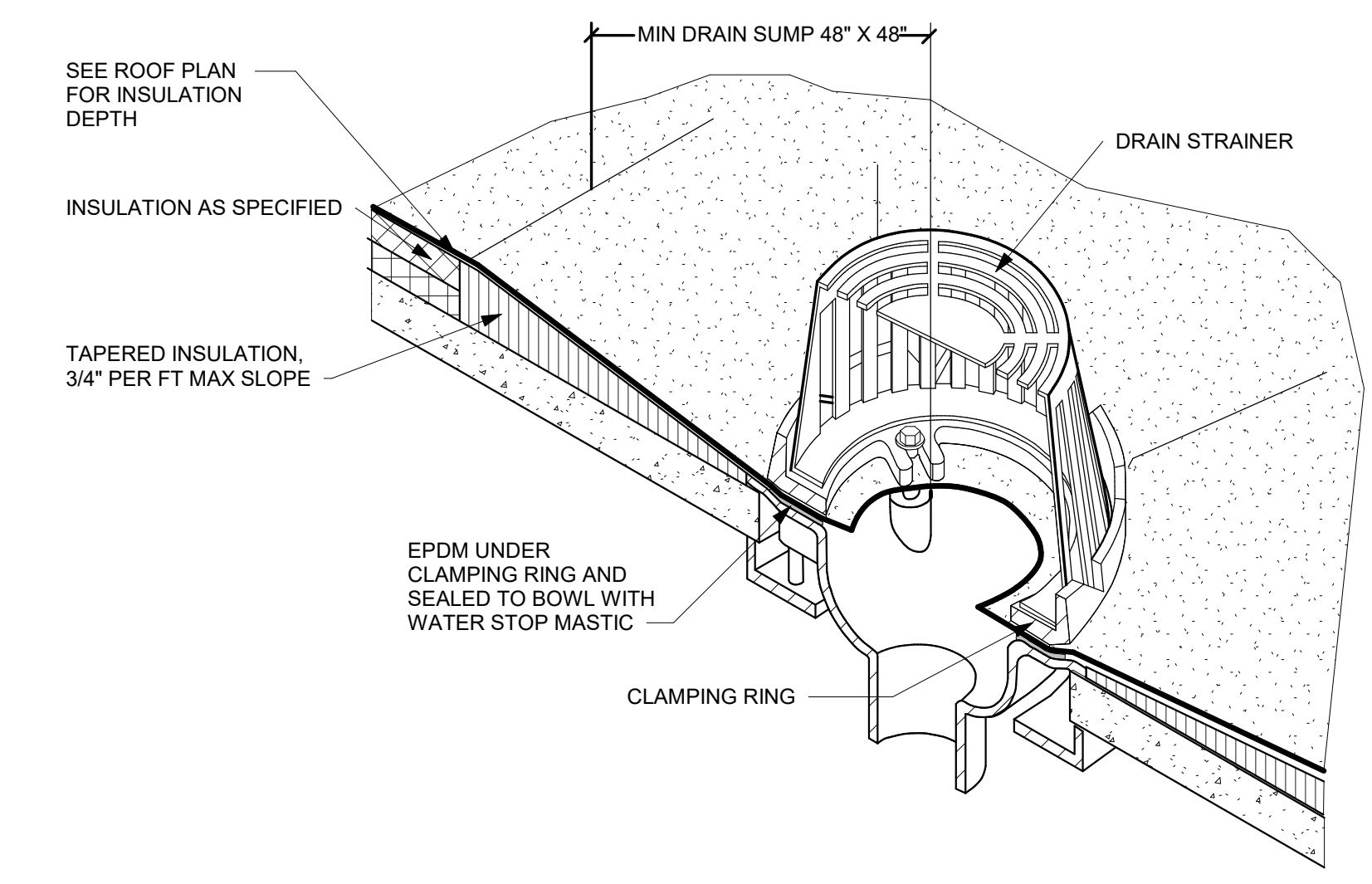
1 CONCRETE STOOP SLAB AT DOOR - SEE STRUCTURAL

2 EXPANSION JOINT - SEE SPECIFICATIONS

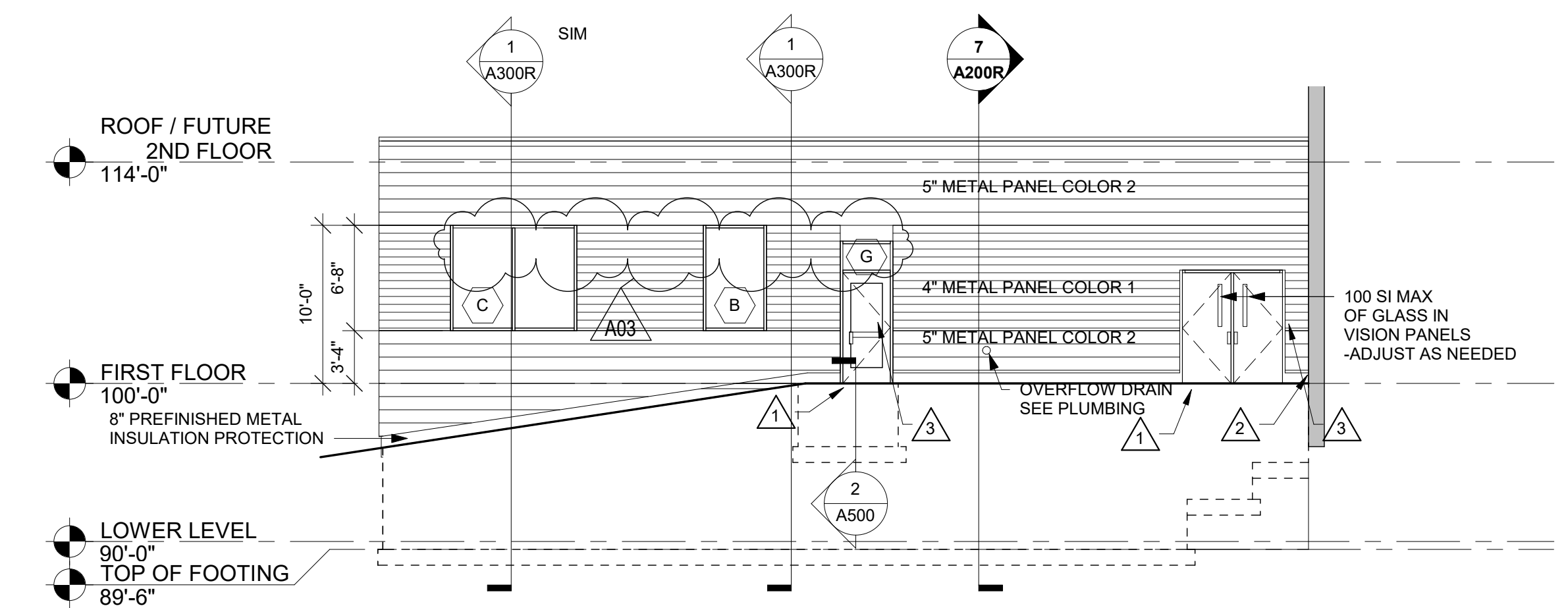
3 CARD READER - SEE ELECTRICAL



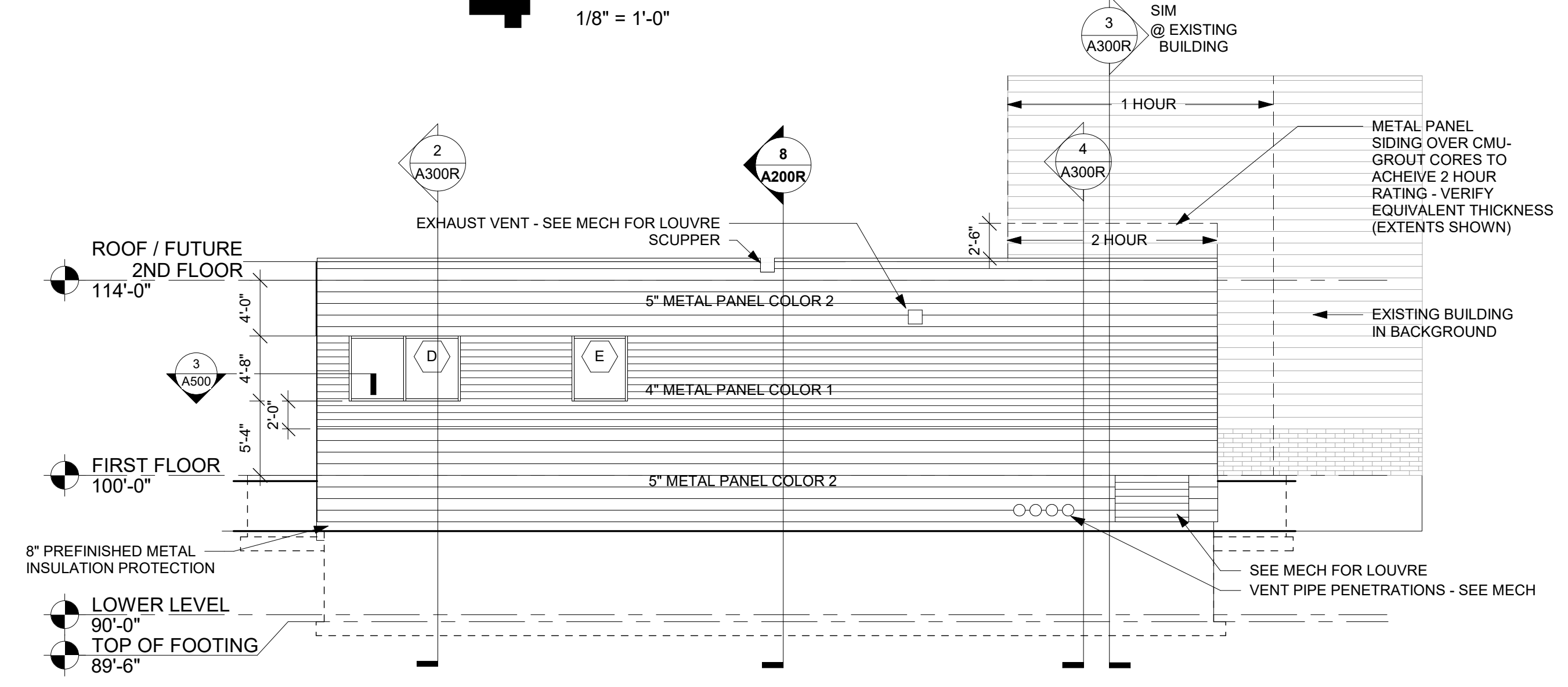
1 ROOF PLAN
1/8" = 1'-0"



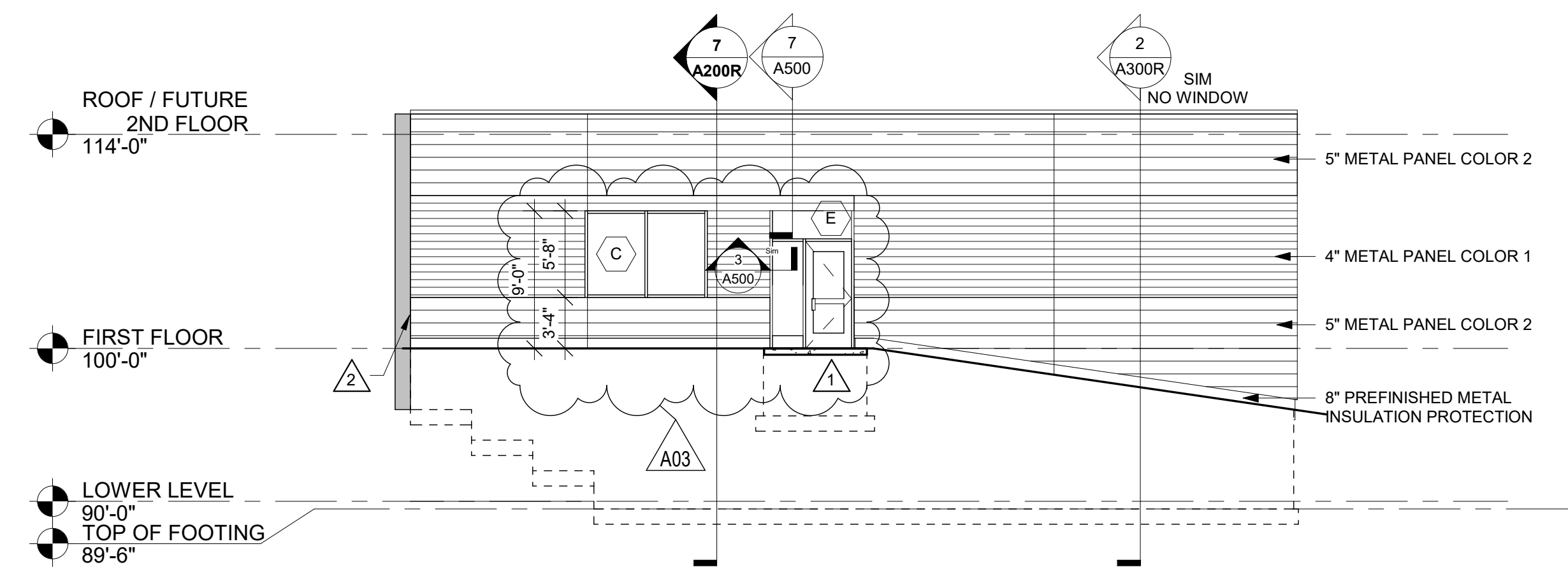
2 ROOF DRAIN DETAIL
1/2" = 1'-0"



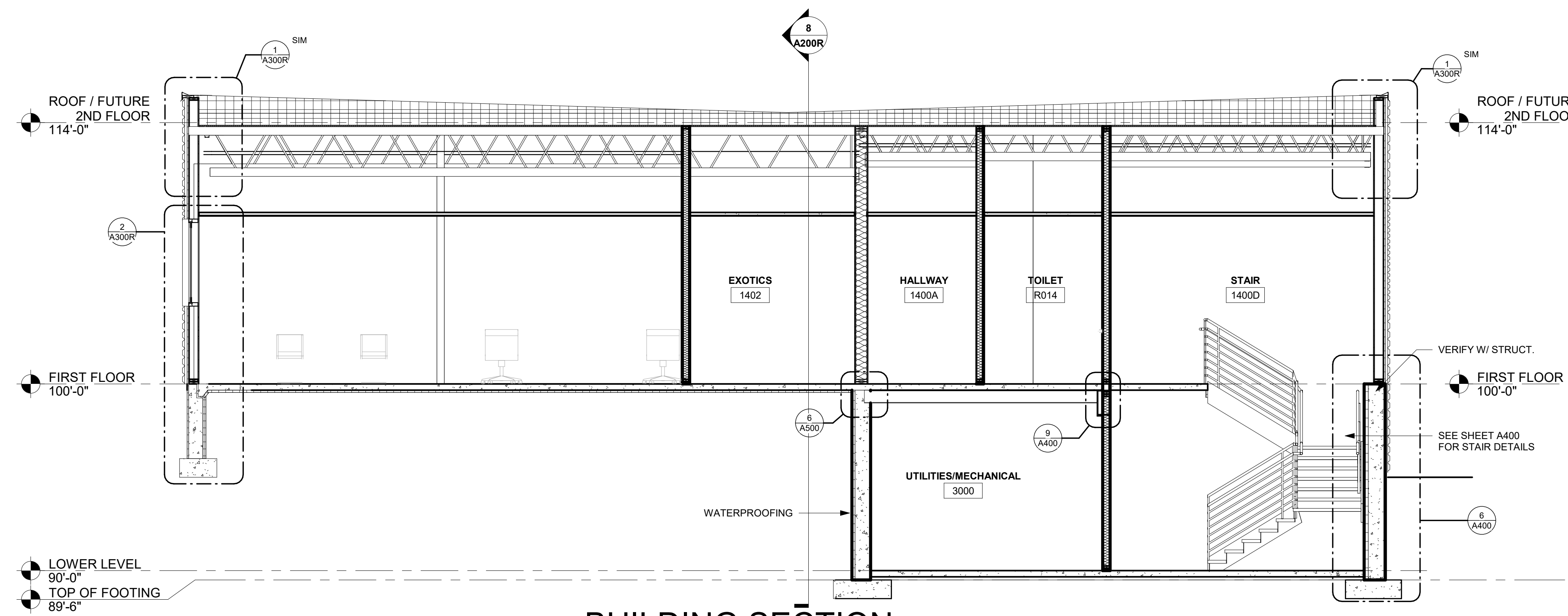
4 WEST ELEVATION
1/8" = 1'-0"



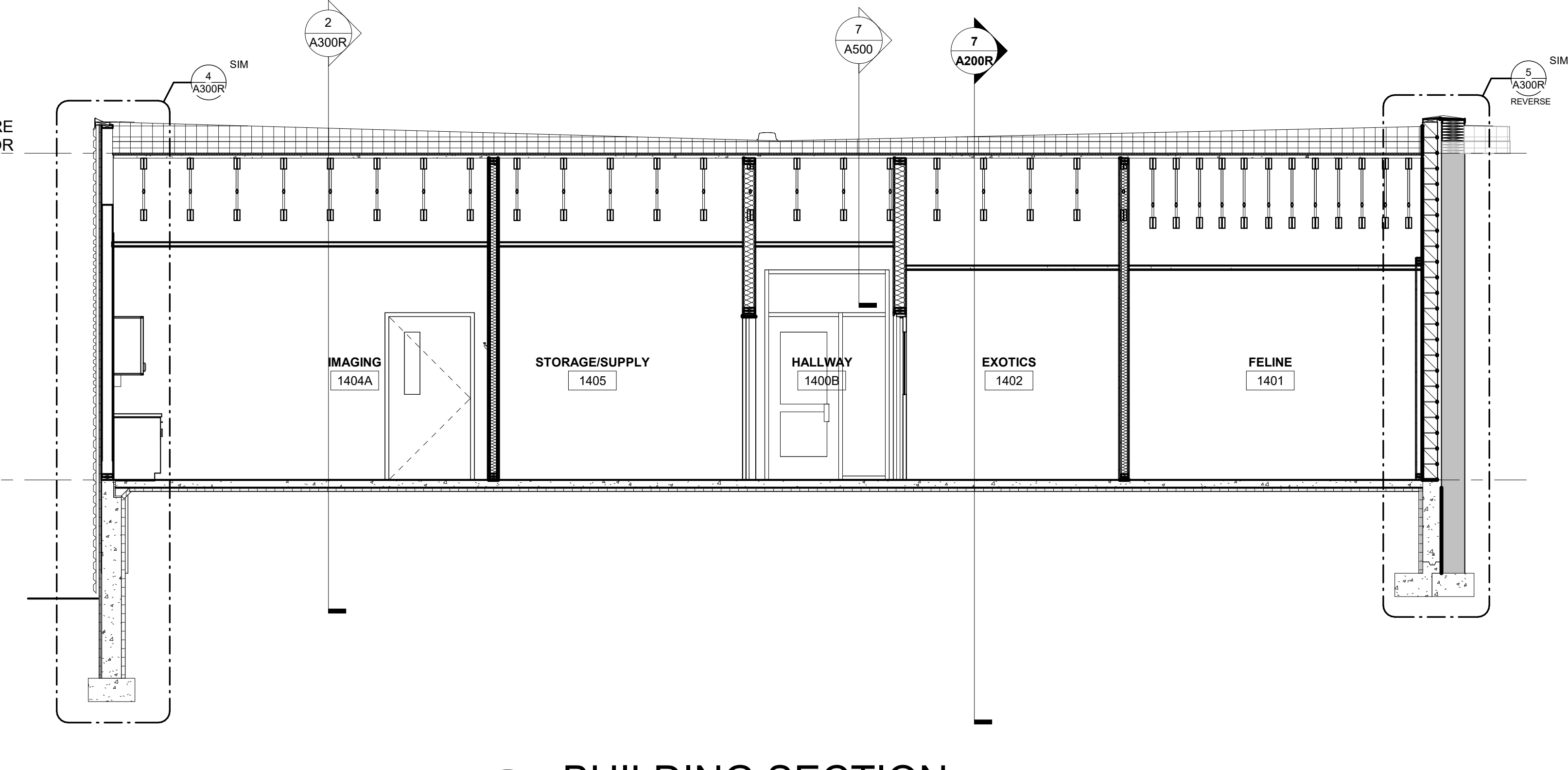
5 NORTH ELEVATION
1/8" = 1'-0"



6 EAST ELEVATION
1/8" = 1'-0"



7 BUILDING SECTION
1/4" = 1'-0"



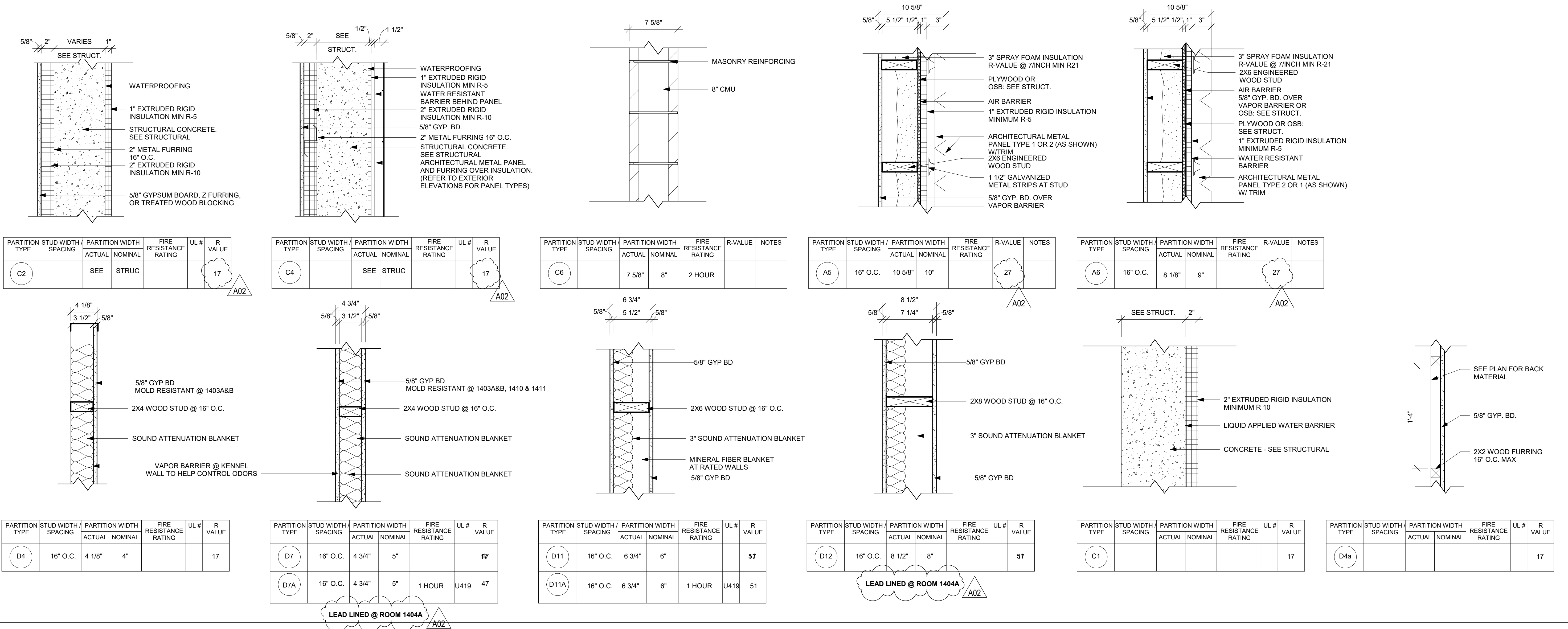
8 BUILDING SECTION
1/4" = 1'-0"

GENERAL WALL TYPE NOTES:

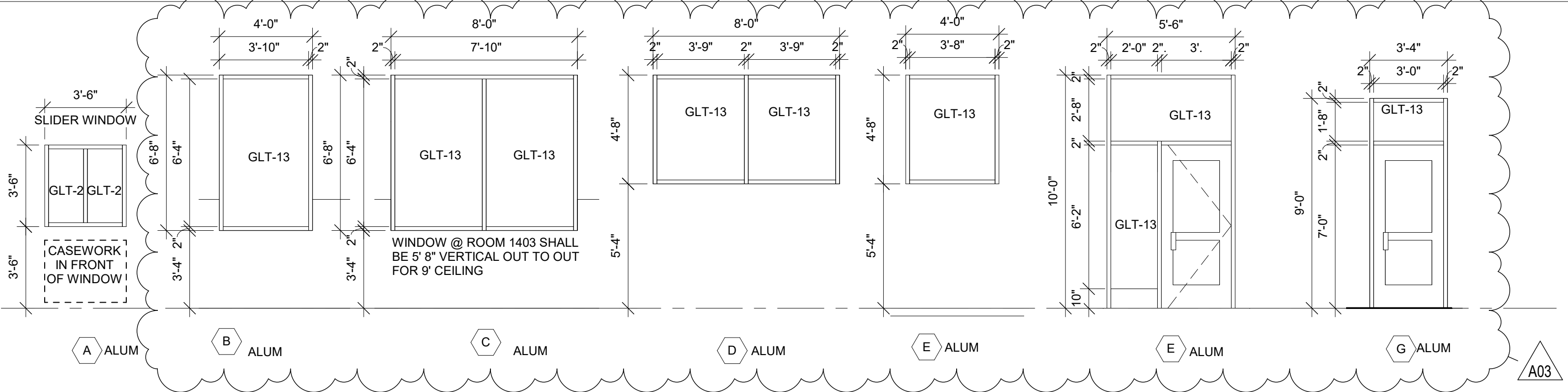
- A REFER TO MASTER COLOR SCHEDULE AND INTERIOR DESIGN SHEETS FOR ADDITIONAL WALL FINISHES.
- B WHERE INTERIOR DESIGN SHEETS INDICATE WALL TILE, INSTALL BACKER BOARD AT WET AND NON-WET LOCATIONS AS LISTED IN 09 21 16
- C NON RATED WALLS, INCLUDING BULKHEADS SHALL HAVE FRAMING EXTENDED TO DECK ABOVE.
- D INSTALL GYPSUM BOARD CONTROL JOINTS AT TOP OF ALL INTERIOR TOP OF DOOR JAMBS TO TOP OF GYPSUM BOARD WALLS. OTHER CONTROL JOINTS TO BE INSTALLED PER PLAN OR AT 30'-0" O.C. MAX. REVIEW LOCATION REQUIREMENTS WITH AS PRIOR TO START OF INSTALLATION OF GYPSUM BOARD ASSEMBLIES.
- E WHERE FIRE RATED WALLS ARE INDICATED BY WALL TYPE, USE UL OR EQUIVALENT APPROVED RATING SYSTEM INCLUDING TOP OF WALL AND PENETRATIONS.
- F MOLD RESISTANT GYP. BD. IN ROOM 1408
- G WALLS WITH SOUND BATT OR RATING SHALL RUN TO DECK AND HAVE GYP. BD. ON BOTH SIDES

WALL ASSEMBLY R-VALUE COMPONENT TABLE:

COMPONENT	R-VALUE
FILM (INSIDE)	.68
5/8" GYP BOARD	.52
6" MTL STUD	--
8" CMU	1.11
CONCRETE	.08 PER INCH (vault); .11 PER INCH (foundation)
5/8 GYP SHEAT	.69
FILM (OUTSIDE)	.17
RIGID FOAM	5 PER INCH
SPRAY FOAM	7 PER INCH
DEAD AIR	.85
BRICK	.44
STONE	.44
MTL PANEL	.62
SEE WALL TYPE FOR TOTAL WALL R-VALUE	



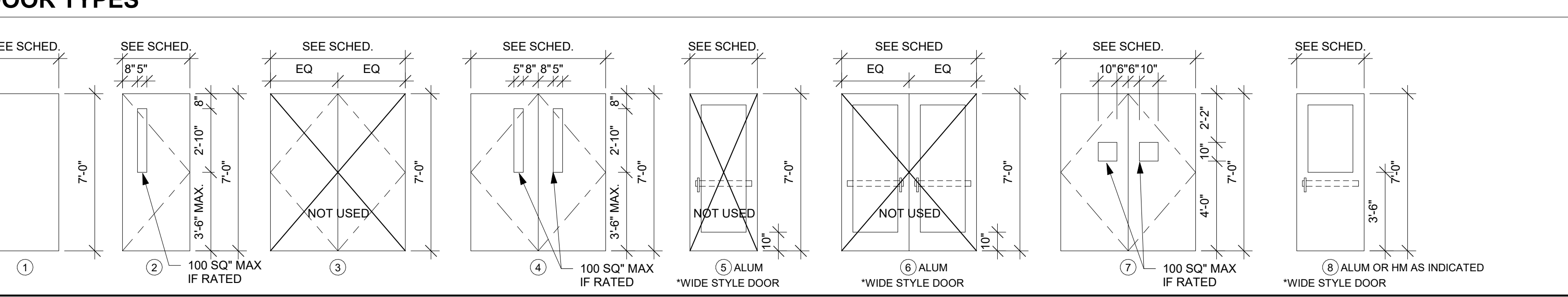
WALL TYPES



FRAME ELEVATIONS

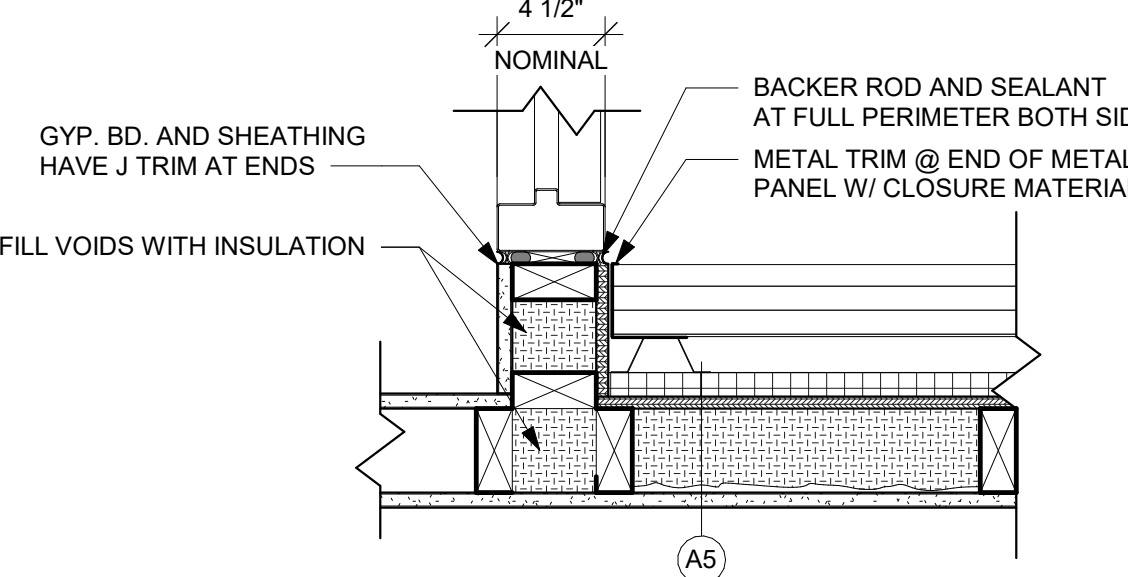
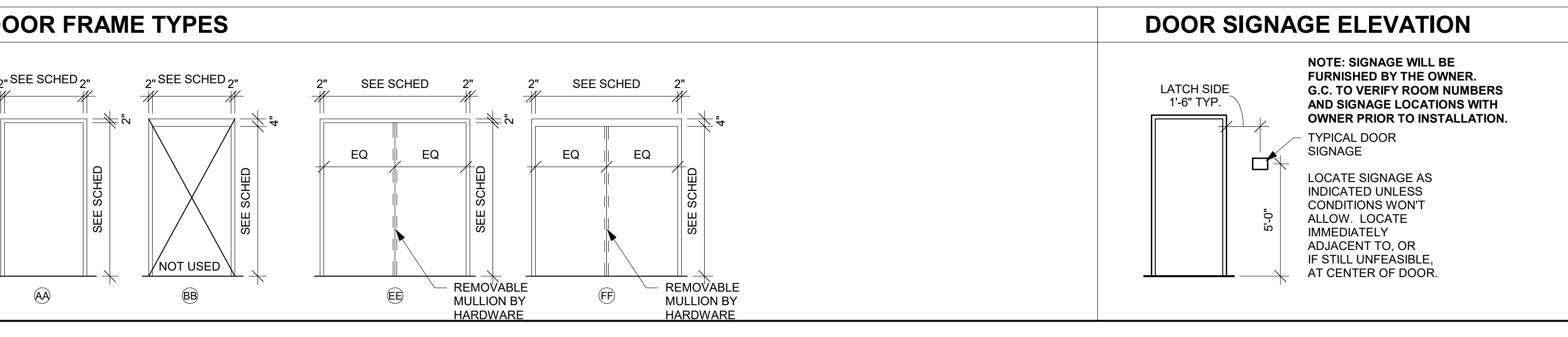
DOOR SCHEDULE GENERAL NOTES

- HM = HOLLOW METAL ALUM = ALUMINUM SCWD = SOLID CORE WOOD DOOR
- A. SEE SPECIFICATIONS FOR DOOR HARDWARE GROUPS
- B. ALL HM (HOLLOW METAL) FRAMES SHALL BE PAINTED, ALUM. IN ANODIZED
- C. ALL DOUBLE DOORS TO HAVE TWO EQUAL LEAFS UNLESS NOTED OTHERWISE

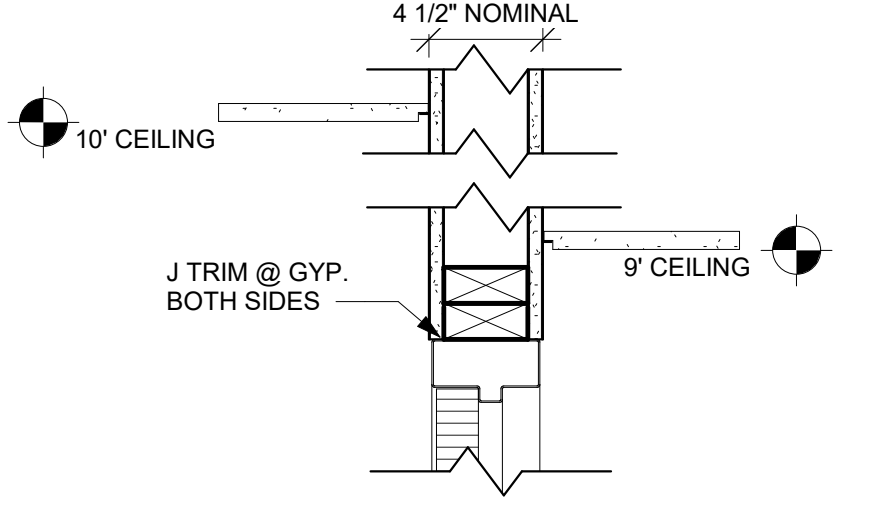


DOOR FRAME GENERAL NOTES

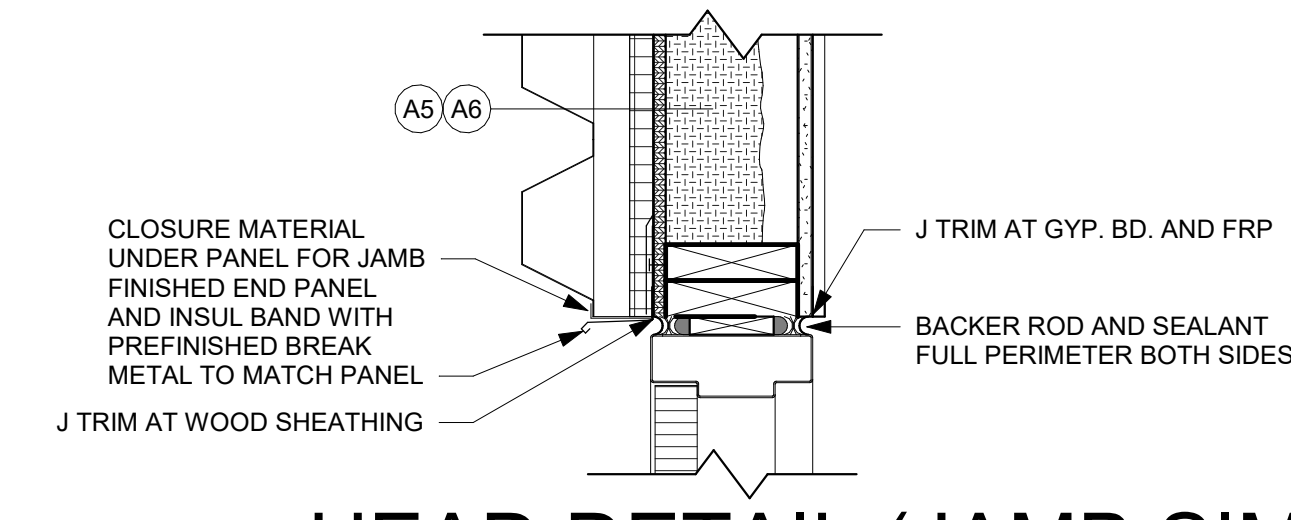
- HM = HOLLOW METAL ALUM = ALUMINUM
- A. SEE SHEET A600 FOR ADDITIONAL FRAME TYPES
- B. ALL HM (HOLLOW METAL) FRAMES SHALL BE PAINTED.



3 JAMB DETAIL
1 1/2" = 1'-0"



4 HEAD/JAMB DETAIL
1 1/2" = 1'-0" SIM - SEE PLAN



5 HEAD DETAIL (JAMB SIM)
1 1/2" = 1'-0"

DOOR NO.	DOOR			FRAME			DETAILS			FIRE LABEL	HDWR GROUP	REMARKS				
	SIZE	MAT'L	DOOR TYPE	GLASS TYPE	U-CUT	MAT'L	FRAME ELEV	NOMINAL DEPTH	HEAD				JAMB	SILL		
1400	6'-0"	7'-0"	1 3/4"	HM	4	GLT-18	-	HM	EE	7 1/2"	1A600	1A600	-	45 MIN	1	CARD READER
1400A	3'-0"	7'-0"	1 3/4"	SCWD	2	GLT-18	-	HM	AA	7 1/2"	2A600	2A600	-	45 MIN	2	CARD READER
1400B	3'-0"	7'-0"	1 3/4"	ALUM	8	GLT-14	-	ALUM	F	4 1/2"	4A600	4A600	-	10	9' HIGH FRAME	
1400C	3'-0"	7'-0"	1 3/4"	ALUM	8	GLT-13	-	ALUM	F	6 1/2"	7A500	3A600	-	9	-	
1400D	3'-0"	7'-0"	1 3/4"	SCWD	1	-	-	HM	AA	8 1/2"	-	-	-	45 MIN	15	180 SWING
1400E	6'-0"	7'-0"	1 3/4"	SCWD	7	GLT-18	-	HM	FF	5 1/2"	-	-	-	6	-	
1400G	3'-0"	7'-0"	1 3/4"	SCWD	1	-	-	HM	AA	8 1/2"	-	-	-	45 MIN	16	
1401	3'-0"	7'-0"	1 3/4"	SCWD	2	GLT-4	-	HM	AA	7 1/2"	-	-	-	5	-	
1402	3'-0"	7'-0"	1 3/4"	SCWD	2	GLT-4	-	HM	AA	7 1/2"	-	-	-	6	-	
1403	3'-0"	7'-0"	1 3/4"	SCWD	8	GLT-4	-	HM	AA	7 1/2"	-	-	-	6	-	
1404	3'-0"	7'-0"	1 3/4"	SCWD	8	GLT-4	-	HM	AA	5 1/2"	-	-	-	12	-	
1404A	3'-0"	7'-0"	1 3/4"	SCWD	2	GLT-4	-	HM	AA	5 1/2"	-	-	-	13	-	
1404B	3'-0"	7'-0"	1 3/4"	SCWD	2	GLT-4	-	HM	AA	7 1/2"	-	-	-	13	-	
1404C	3'-0"	7'-0"	1 3/4"	SCWD	2	GLT-4	-	HM	AA	7 1/2"	-	-	-	13	-	
1405	3'-0"	7'-0"	1 3/4"	SCWD	1	-	-	HM	AA	7 1/2"	-	-	-	4	-	
1408	3'-0"	7'-0"	1 3/4"	SCWD	8	GLT-4	-	HM	AA	5 1/2"	-	-	-	11	-	
1407	3'-0"	7'-0"	1 3/4"	SCWD	2	GLT-4	-	HM	AA	5 1/2"	-	-	-	7	-	
1408A	3'-0"	7'-0"	1 3/4"	SCWD	2	GLT-4	-	HM	AA	5 1/2"	-	-	-	7	-	
1408B	3'-0"	7'-0"	1 3/4"	ALUM	8	GLT-13	-	ALUM	GC	6"	5A600	5A600	-	8	-	INSULATED FRAME/SOUND SEAL
R013	3'-0"	7'-0"	1 3/4"	SCWD	1	-	-	HM	AA	5 1/2"	-	-	-	14	-	CARD READER
R014	3'-0"	7'-0"	1 3/4"	SCWD	1	-	-	HM	AA	5 1/2"	-	-	-	14	-	

- DOOR SCHEDULE GENERAL NOTES
- A CONTRACTOR SHALL VERIFY ALL FRAME DEPTHS PRIOR TO SUBMITTING DOOR AND FRAME SHOP DRAWINGS
 - B SEE 2A600 FOR TYPICAL H.M. DOOR HEAD AND JAMB DETAIL.